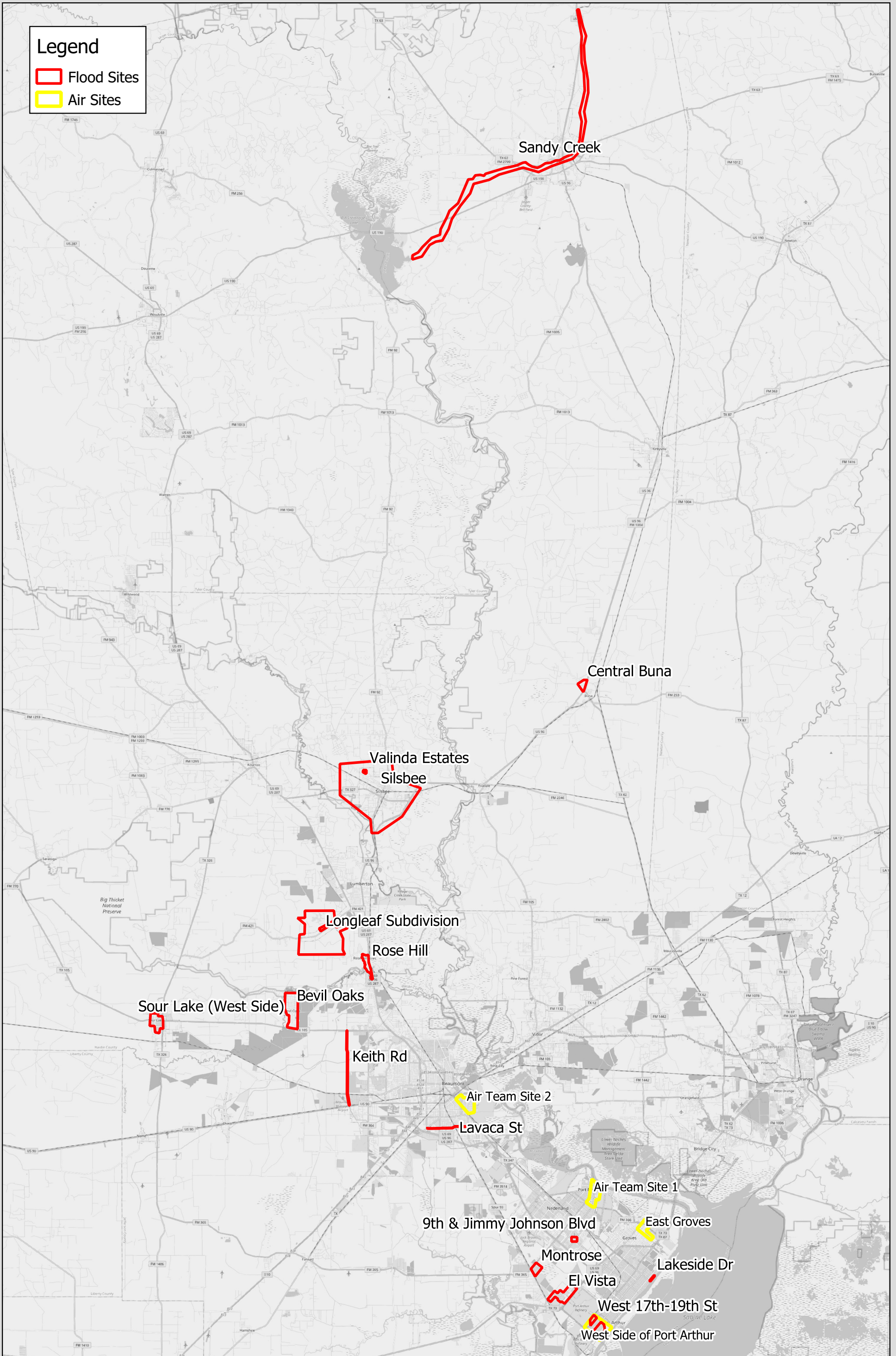


Task Force Site Locations, Southeast Texas



Flood Sites with Demographic and Equity Flags for SETX-UIFL

Site Name	Total Population	Poverty (%)	Low Income (%)	Renter (%)	Minority (%)	0 Equity Flags (%)	3 Equity Flags (%)
West 17th-19th St	2,968	46.2%	74.4%	57.9%	98.3%	0.0%	41.1%
Area near Lincoln MS	3,592	45.6%	76.3%	54.2%	98.4%	0.0%	39.2%
Lavaca St	15,530	36.8%	60.1%	51.4%	93.4%	2.2%	34.8%
9th & Jimmy Johnson Blvd	7,491	30.7%	48.9%	65.0%	60.5%	13.7%	31.0%
Lakeside Dr	4,466	37.5%	65.2%	32.7%	90.5%	1.7%	20.4%
Sandy Creek	5,691	29.8%	57.2%	43.9%	47.8%	19.9%	20.2%
Valinda Estates	714	16.1%	38.7%	25.8%	29.8%	42.6%	8.4%
Silsbee	9,131	15.5%	42.1%	29.6%	31.2%	33.6%	7.9%
Montrose	881	16.3%	40.3%	23.6%	52.3%	21.7%	6.8%
El Vista	1,574	18.4%	46.8%	16.8%	83.3%	5.6%	5.3%
Keith Rd	3,990	13.7%	37.6%	20.3%	56.8%	23.3%	5.2%
Central Buna	1,282	20.6%	62.5%	23.1%	14.0%	22.5%	2.5%
Rose Hill	1,434	11.1%	36.6%	13.9%	9.0%	51.4%	1.0%
Bevil Oaks	1,296	10.0%	31.2%	9.3%	12.9%	54.4%	0.7%
Sour Lake (West Side)	1,807	11.7%	33.0%	24.8%	12.0%	44.8%	0.7%
Longleaf Subdivision	827	12.5%	33.7%	16.0%	8.6%	53.3%	0.5%

Air Sites with Demographic and Equity Flags for SETX-UIFL

Site Name	Total Population	Poverty (%)	Low Income (%)	Renter (%)	Minority (%)	0 Equity Flags (%)	3 Equity Flags (%)
East Groves	6,233	14.6%	31.8%	20.8%	17.0%	46.6%	1.4%
West Side of Port Arthur	4,096	43.6%	74.3%	52.4%	97.7%	0.3%	37.5%
Air Team Site 1	6,959	14.0%	36.9%	24.3%	10.3%	45.2%	1.5%
Air Team Site 2	8,035	36.6%	70.1%	47.8%	91.1%	2.1%	31.7%

Study Area (five county SETX region)

Site Name	Total Population	Poverty (%)	Low Income (%)	Renter (%)	Minority (%)	0 Equity Flags (%)	3 Equity Flags (%)
Study Area	436,890	19.6%	44.6%	28.6%	37.1%	31.4%	10.1%

Note: All sites buffered by 1,000 meters.

Note: Population estimates based on 2010 census block level data, 2012 5-year ACS census tract level data, with Rosenheim 2021 methodology

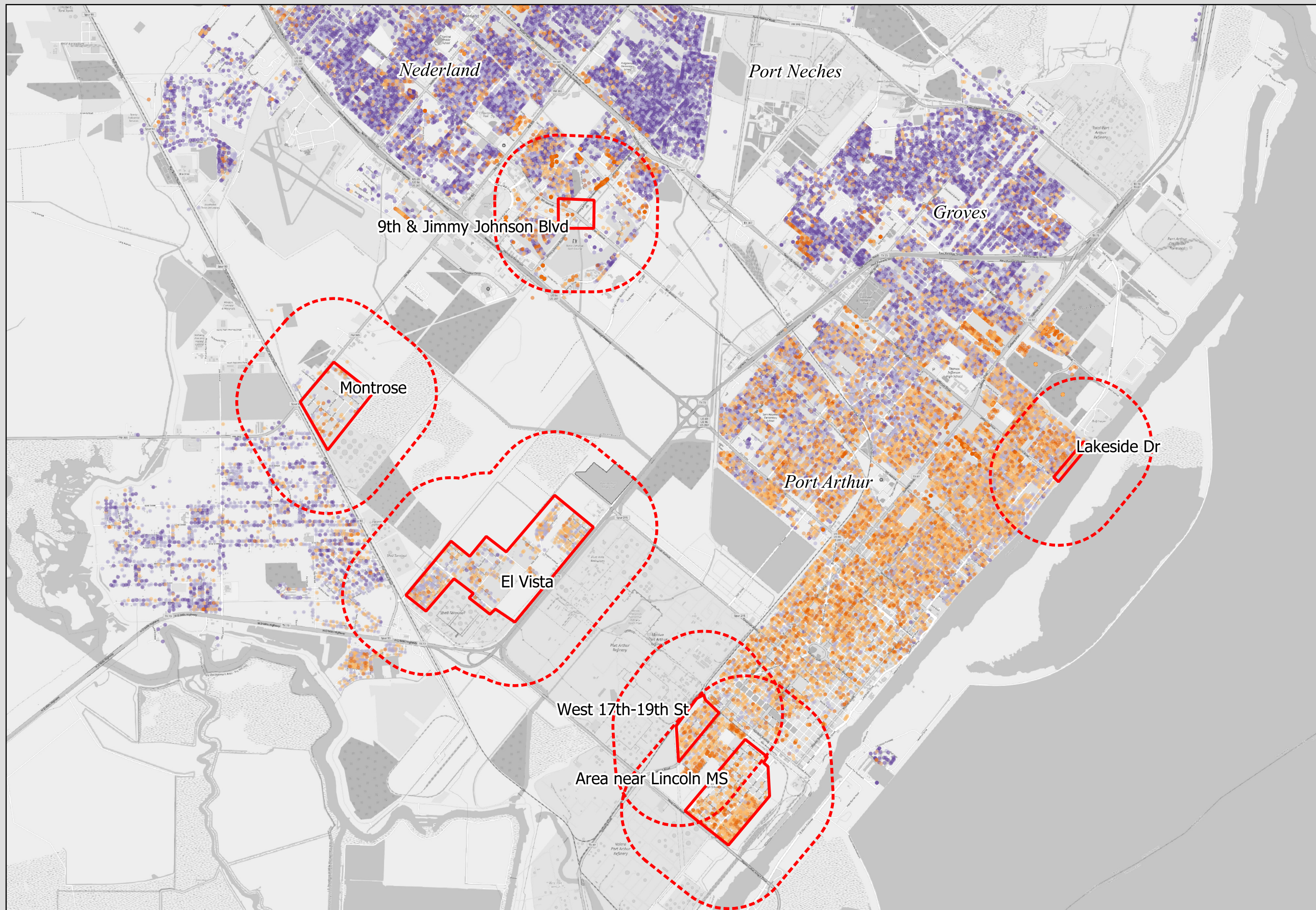
Equity Flags Include - Low Income (less than median income \$45,017), Renter, Minority

0 Equity Flags = Household with a White, non Hispanic homeowner that makes more than \$45,000

3 Equity Flags = Household with a minority renter that makes less than \$45,000

Nathanael Rosenheim 2024-04-11 Source File: tu3svi2_2gv2_IntersectSitesHUA

Comparison of Household Level Equity Flags with Flood Sites Locations, Southeast Texas



Legend

- 1,000 Meter Buffer
- Flood Sites

Equity Flags

- 0
- 1
- 2
- 3

1 dot = 1 household

Equity Flags Include:

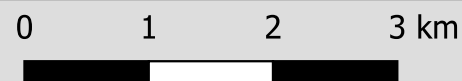
- Income below median (\$45,000)
- Renter
- Minority

0 Equity flags represent a White non-Hispanic homeowner with income greater than \$45,000

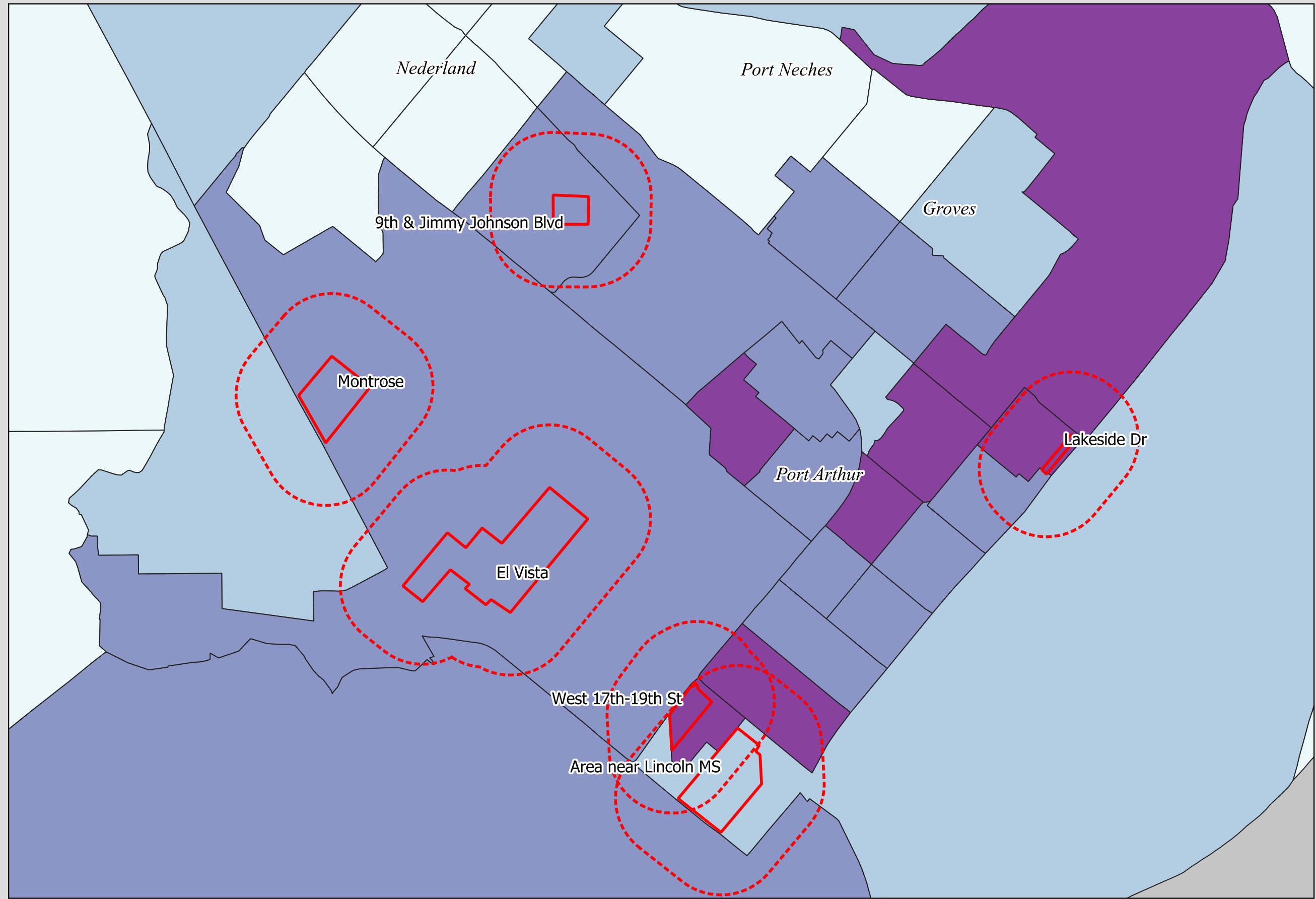
1 Equity flag represents a household that either has low income, is a renter, or a minority.

2 Equity flags represent some combination of 2 flags. For example, a low income renter.

3 Equity flags represent a household that has an income below the median, is a renter and a minority.

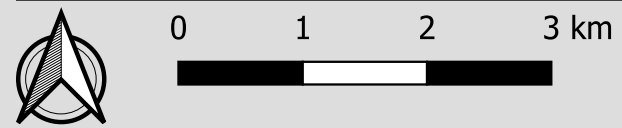


Comparison of Census Tract CDC SVI with Flood Sites Locations, Southeast Texas



Legend

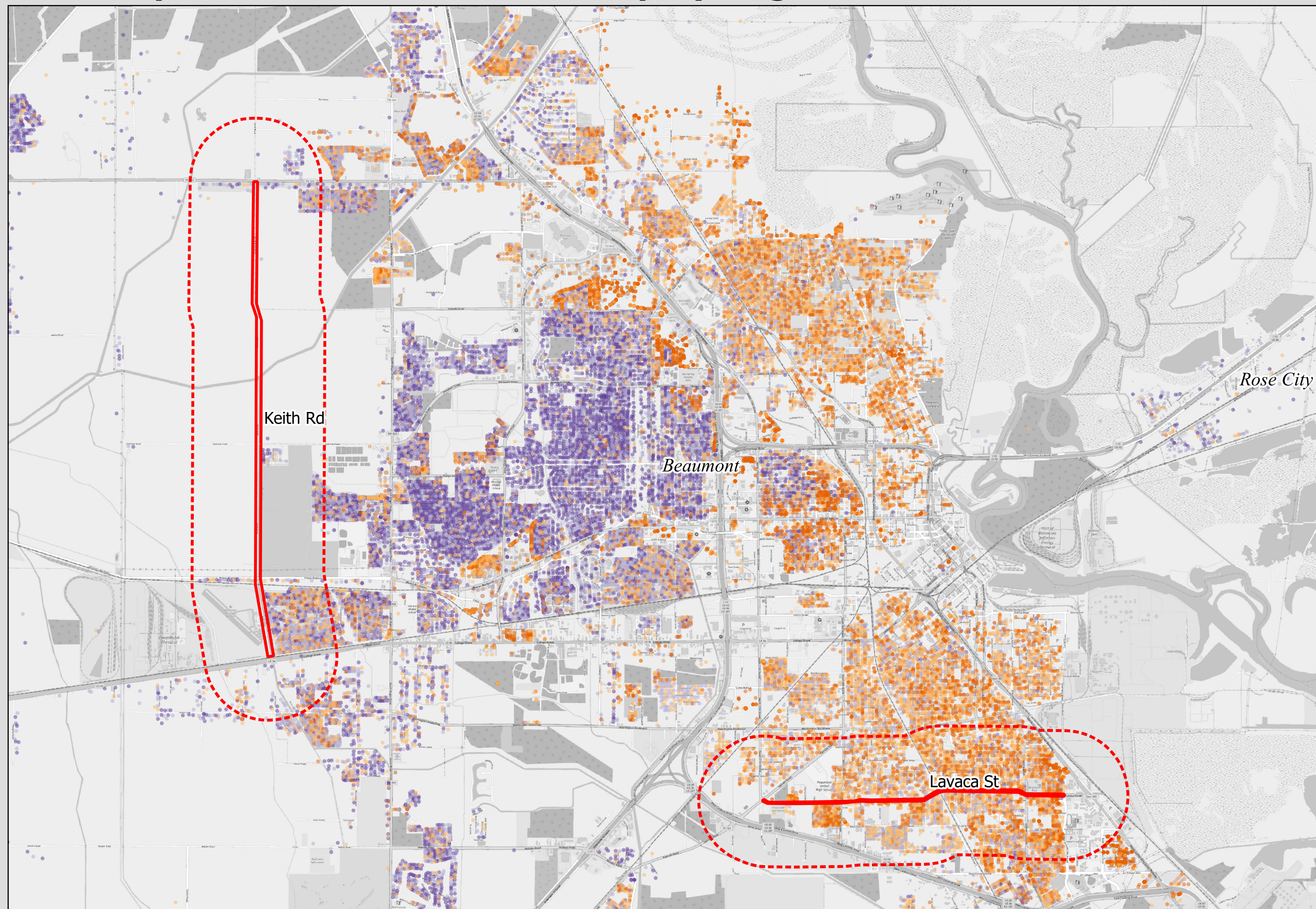
- 1,000 Meter Buffer (Red dashed line)
- Flood Sites (Red outline)
- CDC/ASTSDR SVI
 - Low (White)
 - Low-Medium (Light Blue)
 - Medium (Blue)
 - High (Purple)
 - No Data (Grey)



Source: 2018 5-year American Community Survey CDC/ATSDR Social Vulnerability Index (CDC/ATSDR SVI)



Comparison of Household Level Equity Flags with Flood Sites Locations, Southeast Texas



Legend

1,000 Meter Buffer

Flood Sites

Equity Flags

0

1

2

3

1 dot = 1 household

Equity Flags Include:

- Income below median (\$45,000)
- Renter
- Minority

0 Equity flags represent a White non-Hispanic homeowner with income greater than \$45,000

1 Equity flag represents a household that either has low income, is a renter, or a minority.

2 Equity flags represent some combination of 2 flags. For example, a low income renter.

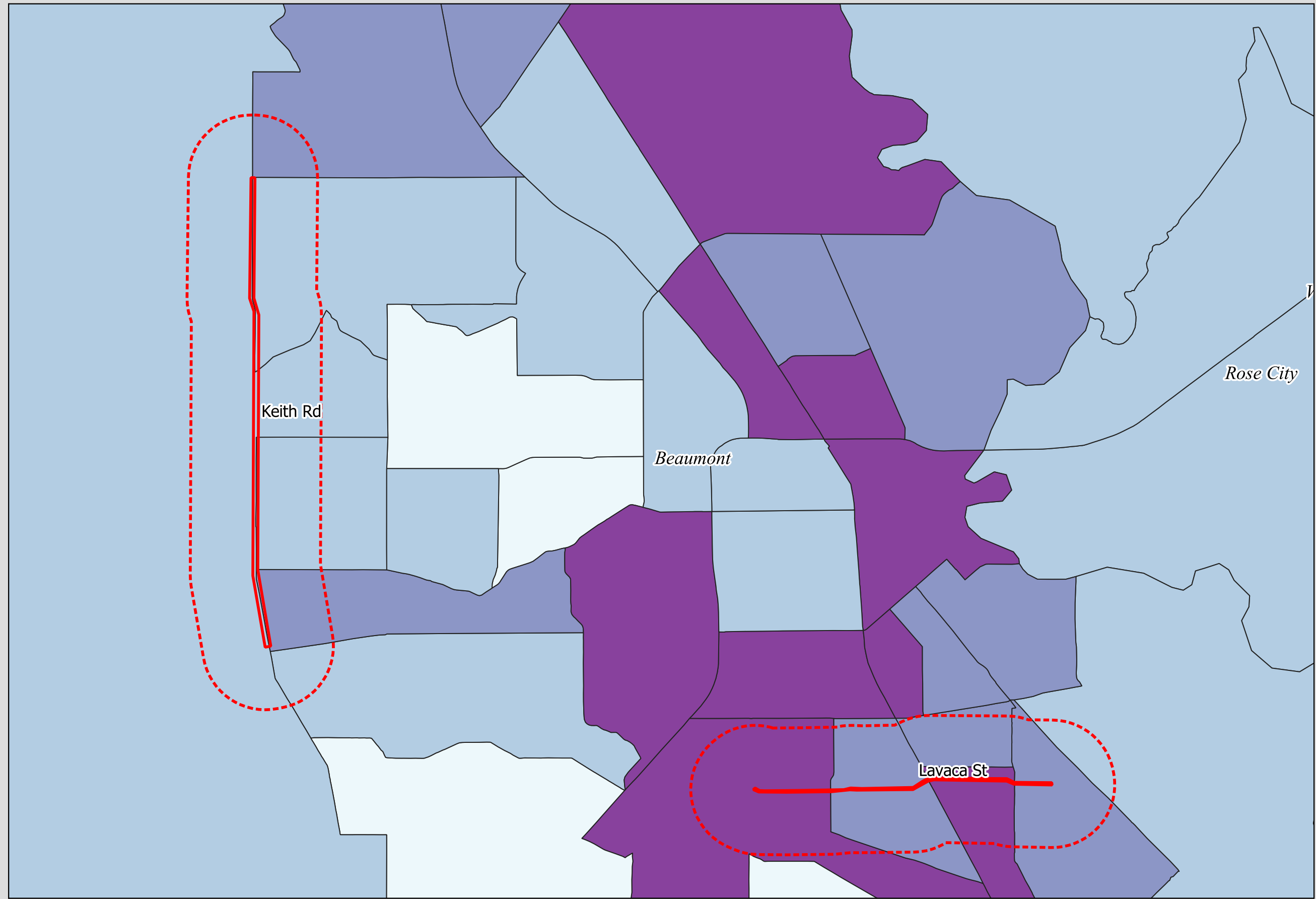
3 Equity flags represent a household that has an income below the median, is a renter and a minority.



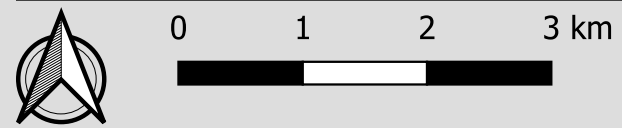
0 1 2 3 km



Comparison of Census Tract CDC SVI with Flood Sites Locations, Southeast Texas

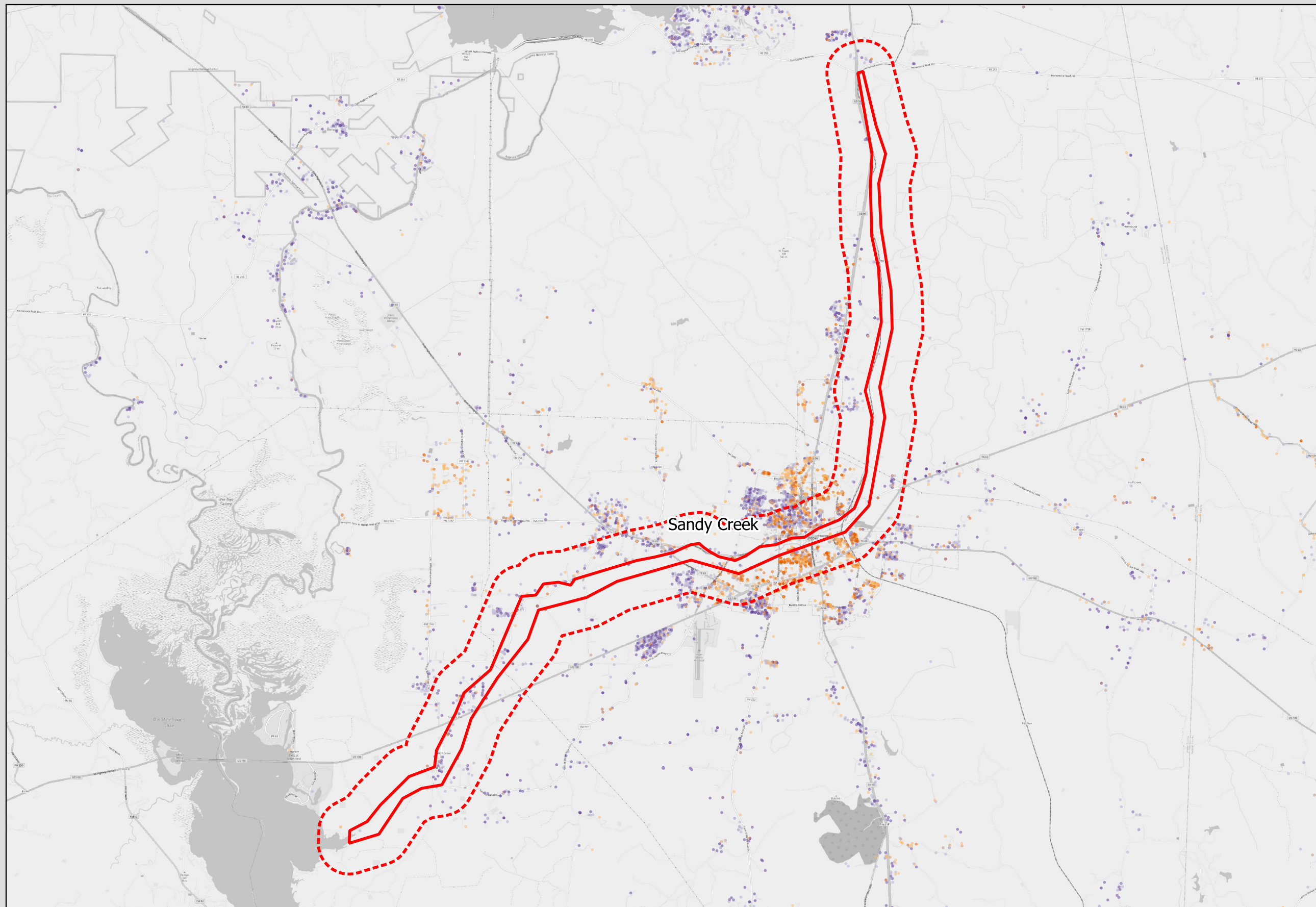


- Legend
- 1,000 Meter Buffer
 - Flood Sites
 - CDC/ASTSDR SVI
 - Low
 - Low-Medium
 - Medium
 - High
 - No Data



Source: 2018 5-year American Community Survey CDC/ATSDR Social Vulnerability Index (CDC/ATSDR SVI)

Comparison of Household Level Equity Flags with Flood Sites Locations, Southeast Texas



Legend

1,000 Meter Buffer

Flood Sites

Equity Flags

0

1

2

3

1 dot = 1 household

Equity Flags Include:

- Income below median (\$45,000)
- Renter
- Minority

0 Equity flags represent a White non-Hispanic homeowner with income greater than \$45,000

1 Equity flag represents a household that either has low income, is a renter, or a minority.

2 Equity flags represent some combination of 2 flags. For example, a low income renter.

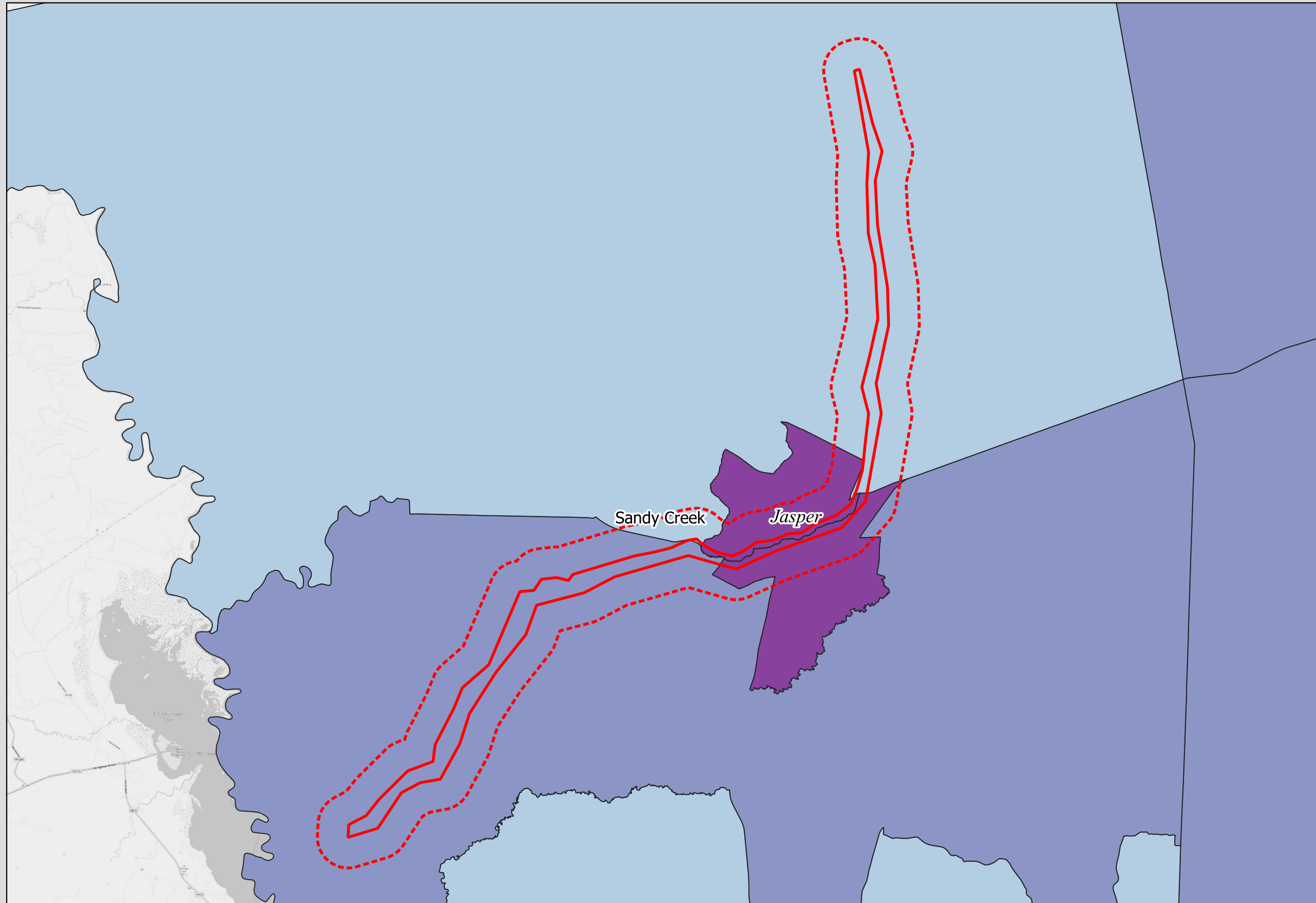
3 Equity flags represent a household that has an income below the median, is a renter and a minority.

0 1 2 3 km

Source: 2010 Decennial Census, 2012 5-year American Community Survey, Transformed using Intersect Community Data (Rosenheim 2024 <https://github.com/npr99/intersect-community-data>)



Comparison of Census Tract CDC SVI with Flood Sites Locations, Southeast Texas



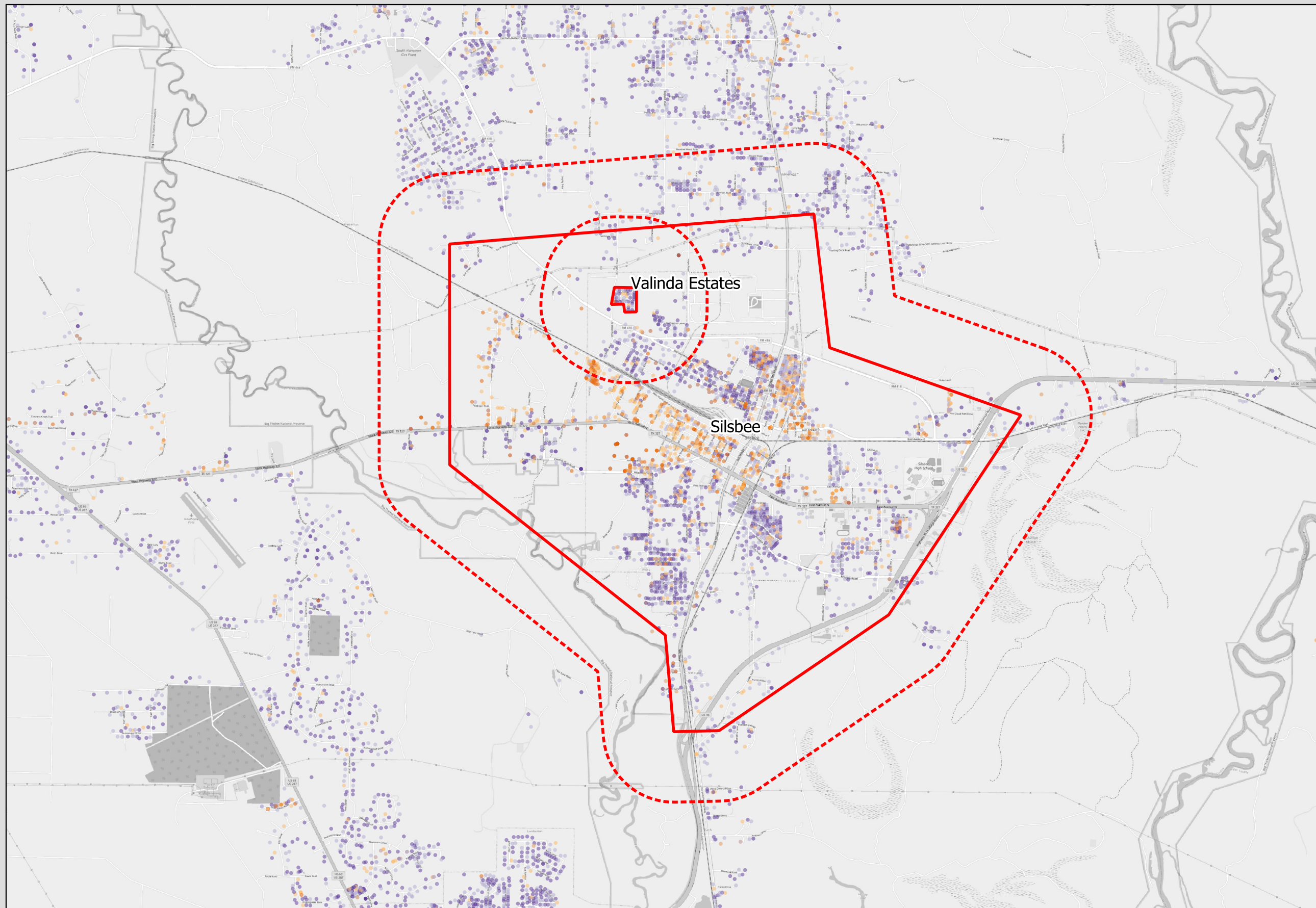
- Legend
- 1,000 Meter Buffer
 - Flood Sites
 - CDC/ASTSDR SVI
 - Low
 - Low-Medium
 - Medium
 - High
 - No Data

0 1 2 3 km

Source: 2018 5-year American Community Survey CDC/ATSDR Social Vulnerability Index (CDC/ATSDR SVI)



Comparison of Household Level Equity Flags with Flood Sites Locations, Southeast Texas



Legend

1,000 Meter Buffer

Flood Sites

Equity Flags

0

1

2

3

1 dot = 1 household

Equity Flags Include:

- Income below median (\$45,000)
- Renter
- Minority

0 Equity flags represent a White non-Hispanic homeowner with income greater than \$45,000

1 Equity flag represents a household that either has low income, is a renter, or a minority.

2 Equity flags represent some combination of 2 flags. For example, a low income renter.

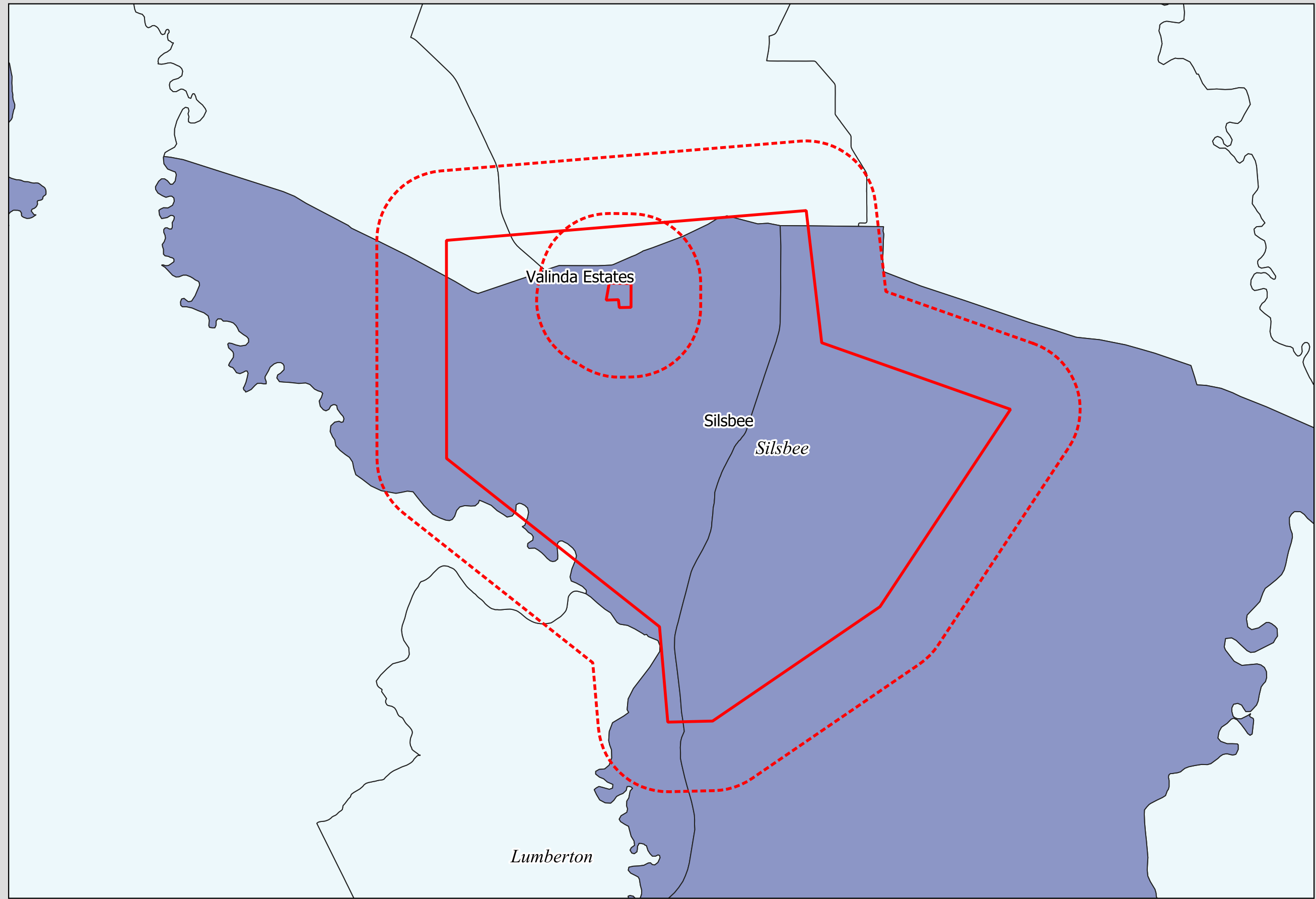
3 Equity flags represent a household that has an income below the median, is a renter and a minority.



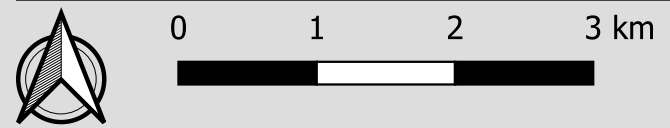
0 1 2 3 km



Comparison of Census Tract CDC SVI with Flood Sites Locations, Southeast Texas

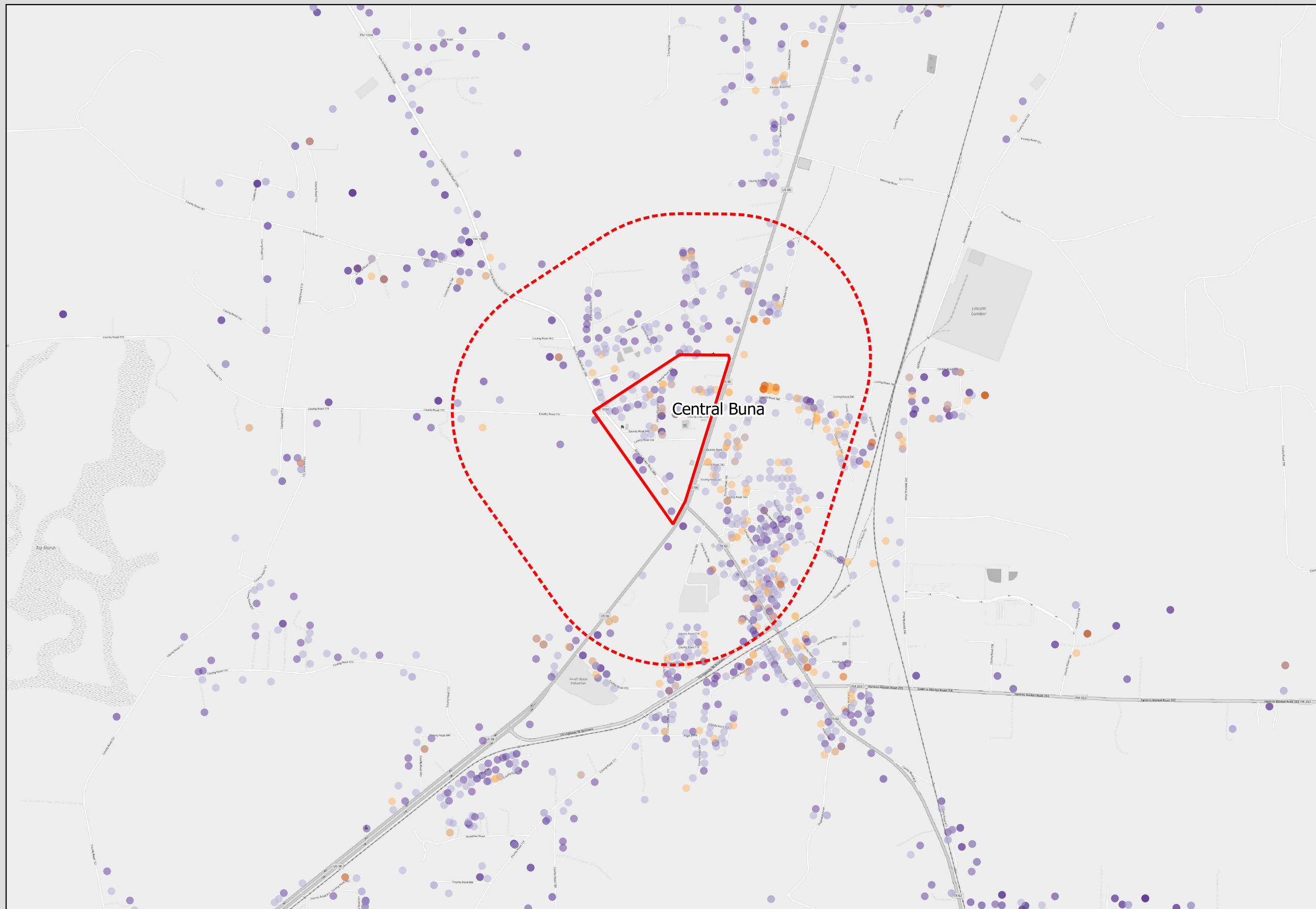


- Legend
- 1,000 Meter Buffer
 - Flood Sites
 - CDC/ASTSDR SVI
 - Low
 - Low-Medium
 - Medium
 - High
 - No Data



Source: 2018 5-year American Community Survey CDC/ATSDR Social Vulnerability Index (CDC/ATSDR SVI)

Comparison of Household Level Equity Flags with Flood Sites Locations, Southeast Texas



Legend

- 1,000 Meter Buffer
- Flood Sites

Equity Flags

- 0
- 1
- 2
- 3

1 dot = 1 household

Equity Flags Include:

- Income below median (\$45,000)
- Renter
- Minority

0 Equity flags represent a White non-Hispanic homeowner with income greater than \$45,000

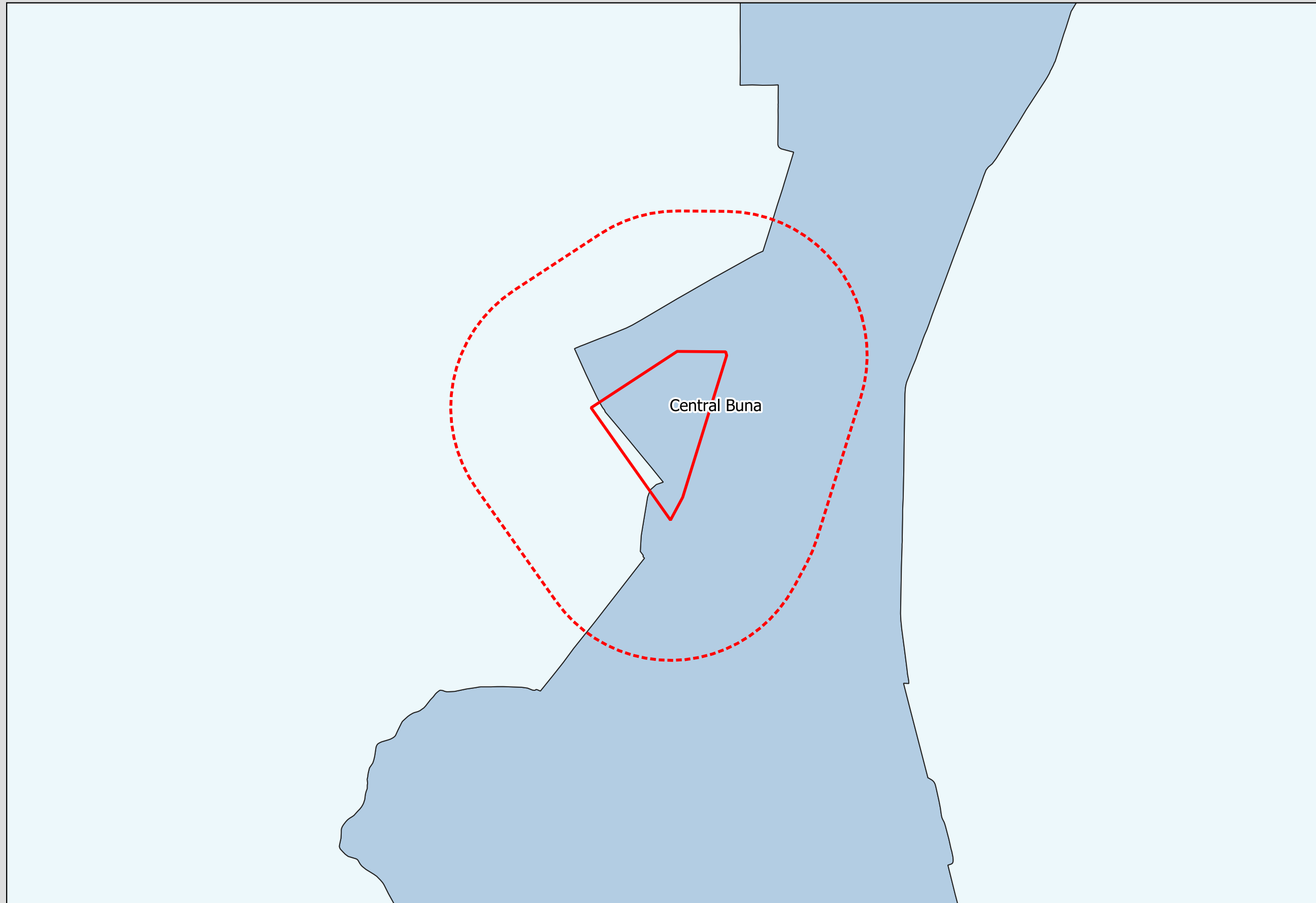
1 Equity flag represents a household that either has low income, is a renter, or a minority.

2 Equity flags represent some combination of 2 flags. For example, a low income renter.

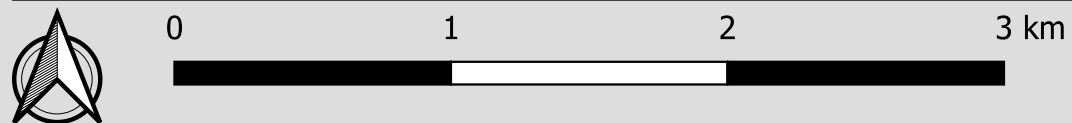
3 Equity flags represent a household that has an income below the median, is a renter and a minority.



Comparison of Census Tract CDC SVI with Flood Sites Locations, Southeast Texas

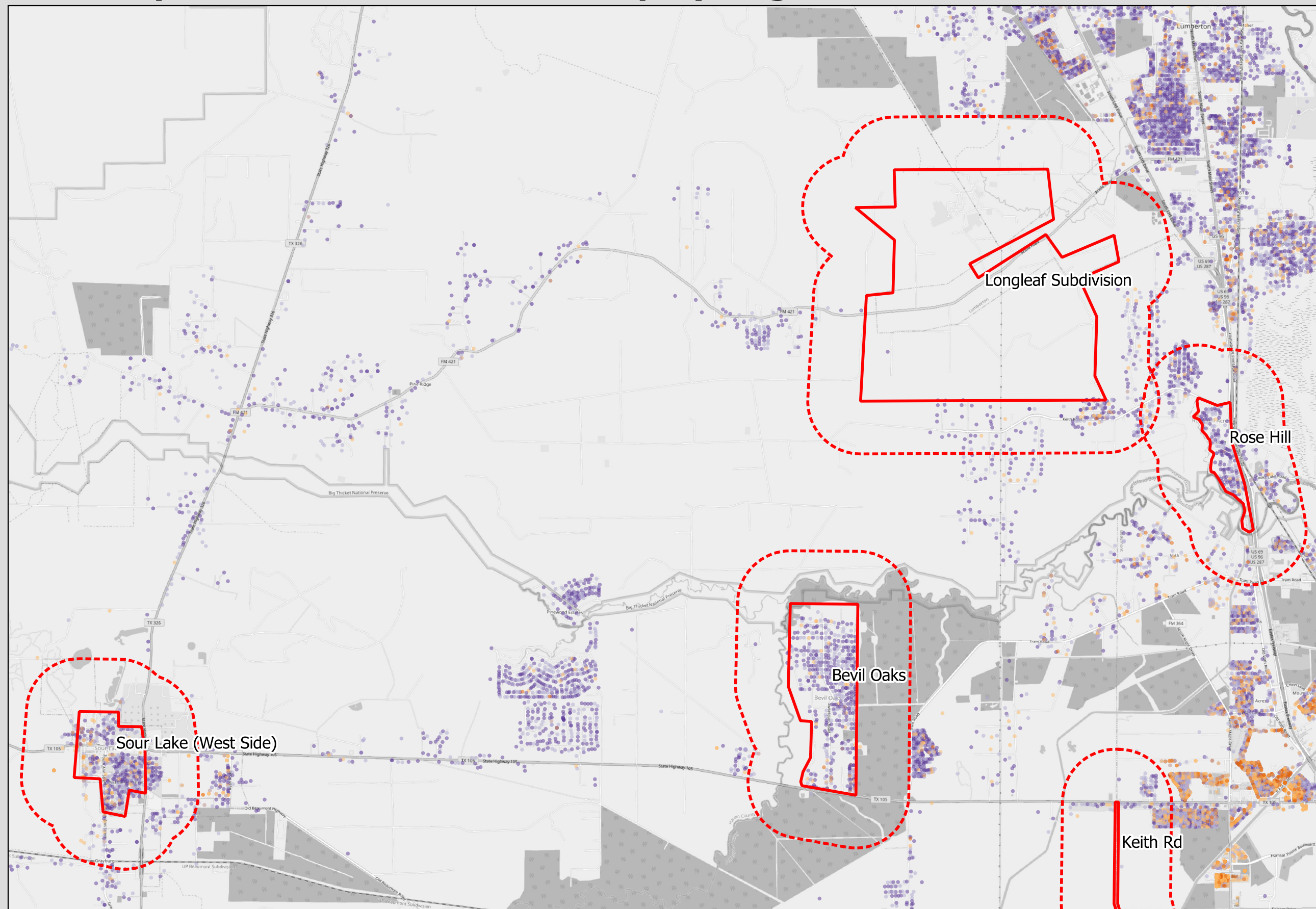


- Legend
- 1,000 Meter Buffer
 - Flood Sites
 - CDC/ASTSDR SVI
 - Low
 - Low-Medium
 - Medium
 - High
 - No Data



Source: 2018 5-year American Community Survey CDC/ATSDR Social Vulnerability Index (CDC/ATSDR SVI)

Comparison of Household Level Equity Flags with Flood Sites Locations, Southeast Texas



Legend

- 1,000 Meter Buffer
- Flood Sites

Equity Flags

- 0
- 1
- 2
- 3

1 dot = 1 household

Equity Flags Include:

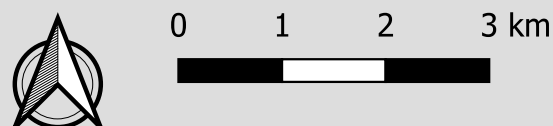
- Income below median (\$45,000)
- Renter
- Minority

0 Equity flags represent a White non-Hispanic homeowner with income greater than \$45,000

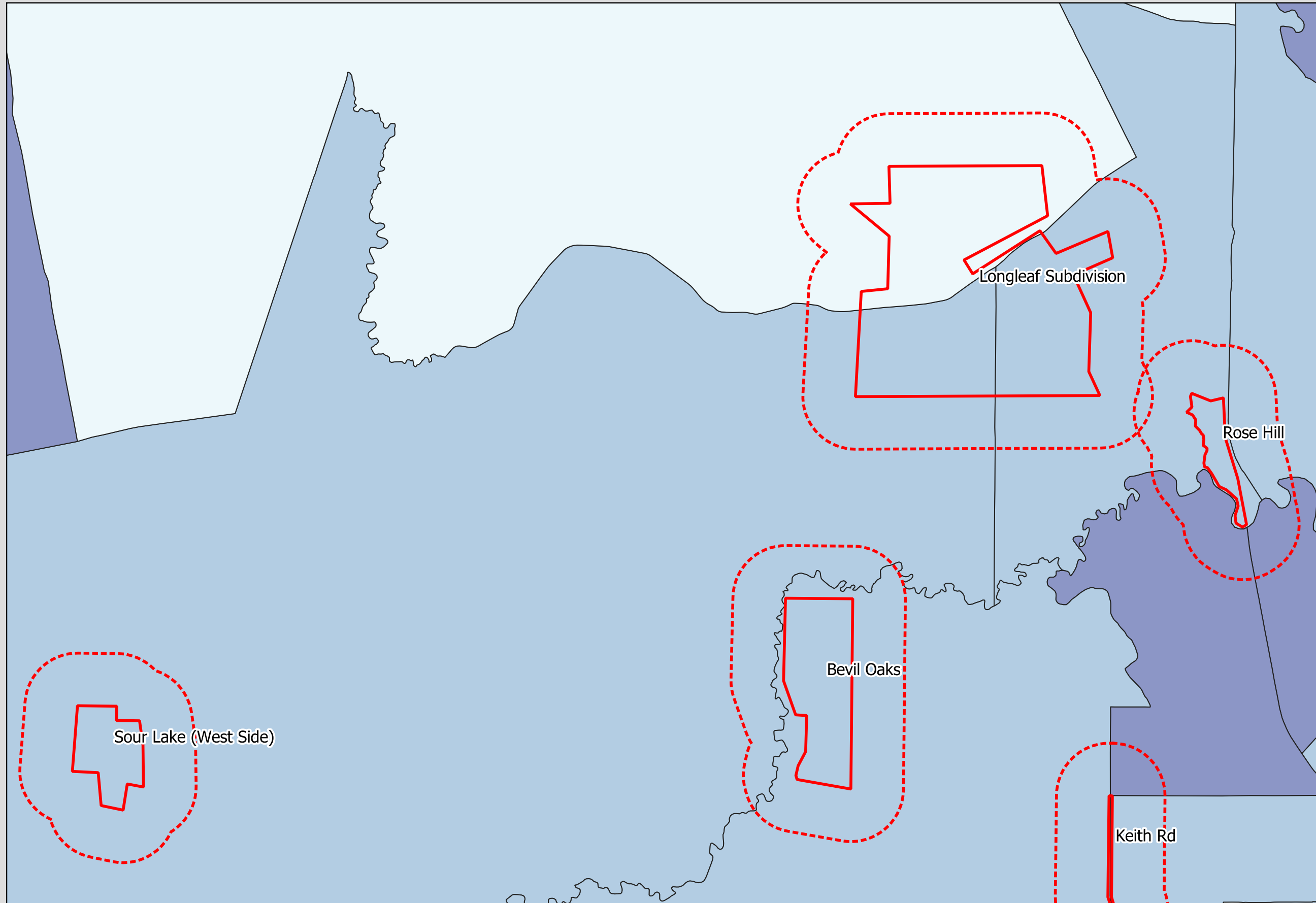
1 Equity flag represents a household that either has low income, is a renter, or a minority.

2 Equity flags represent some combination of 2 flags. For example, a low income renter.

3 Equity flags represent a household that has an income below the median, is a renter and a minority.

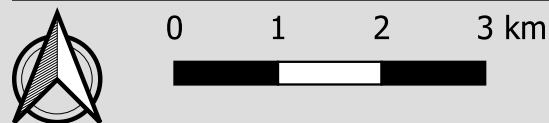


Comparison of Census Tract CDC SVI with Flood Sites Locations, Southeast Texas



Legend

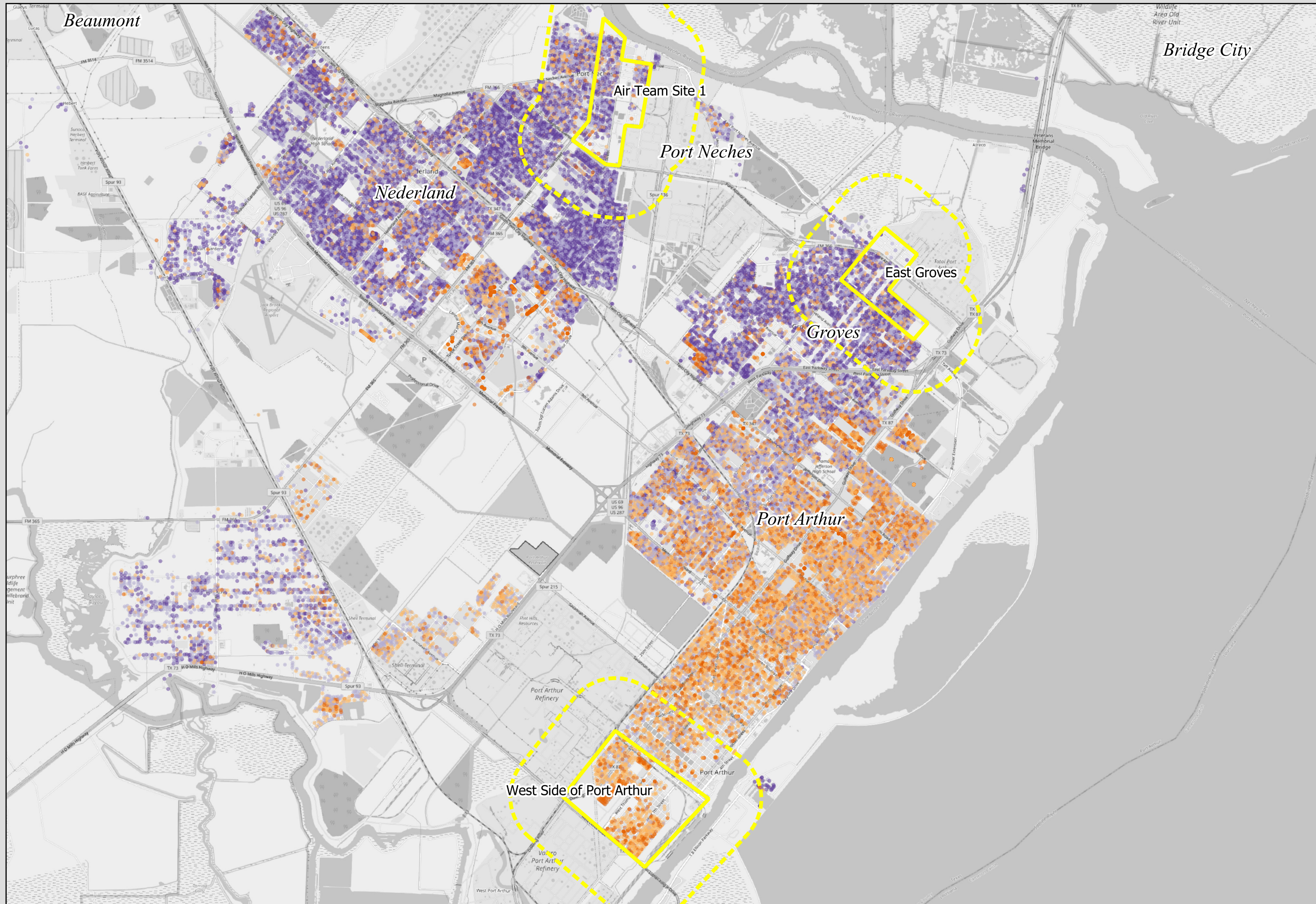
- 1,000 Meter Buffer
- Flood Sites
- CDC/ASTSDR SVI
 - Low
 - Low-Medium
 - Medium
 - High
 - No Data



Source: 2018 5-year American Community Survey CDC/ATSDR Social Vulnerability Index (CDC/ATSDR SVI)



Comparison of Household Level Equity Flags with Flood Sites Locations, Southeast Texas



Legend
 1,000 Meter Buffer
 Air Sites

Equity Flags
● 0
● 1
● 2
● 3

1 dot = 1 household

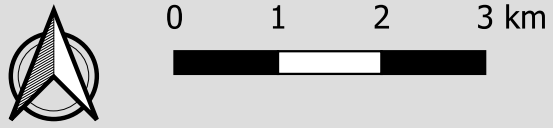
Equity Flags Include:
 - Income below median (\$45,000)
 - Renter
 - Minority

0 Equity flags represent a White non-Hispanic homeowner with income greater than \$45,000

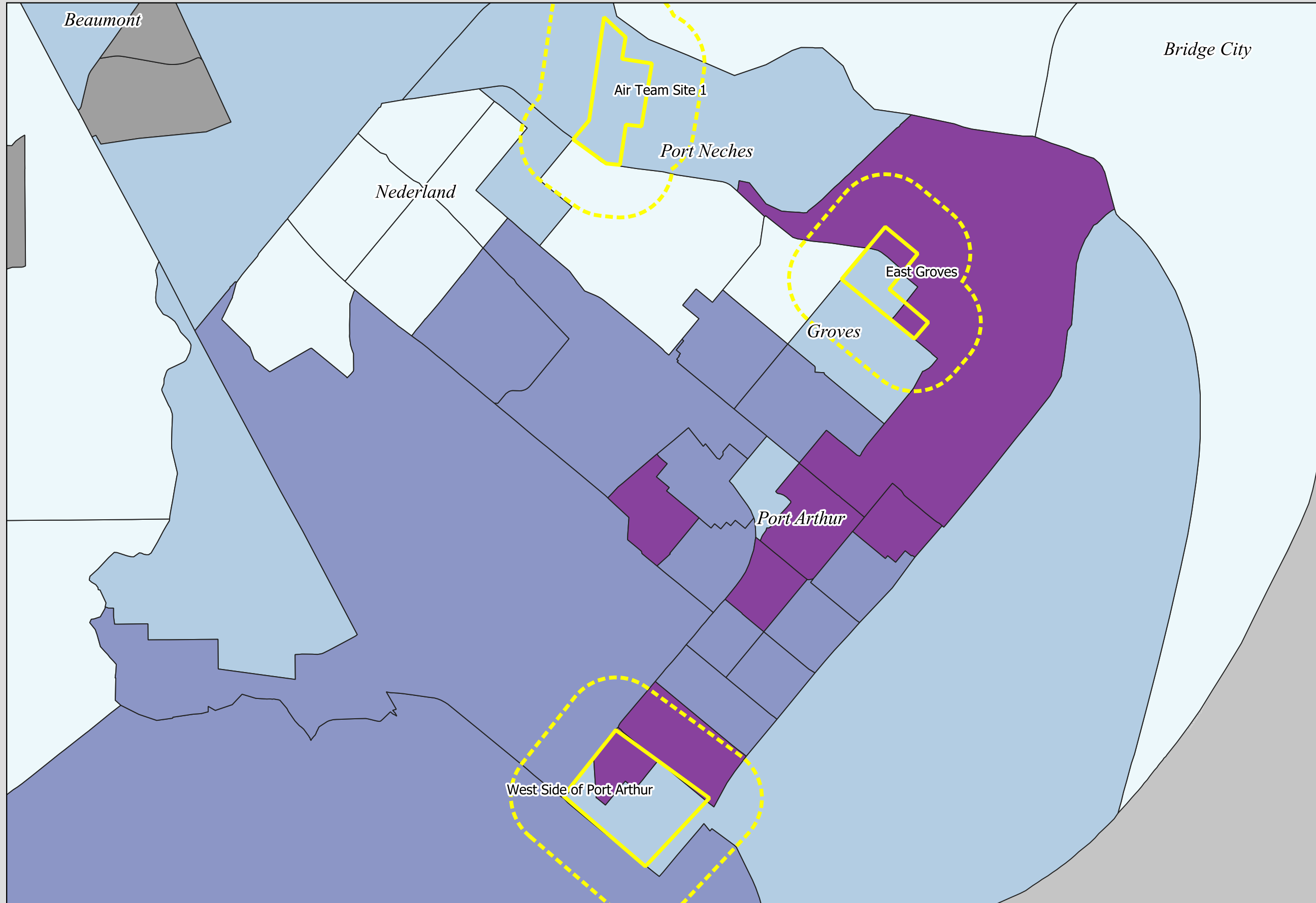
1 Equity flag represents a household that either has low income, is a renter, or a minority.

2 Equity flags represent some combination of 2 flags. For example, a low income renter.

3 Equity flags represent a household that has an income below the median, is a renter and a minority.

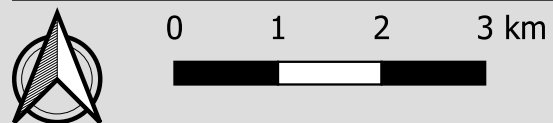


Comparison of Census Tract CDC SVI with Flood Sites Locations, Southeast Texas



Legend

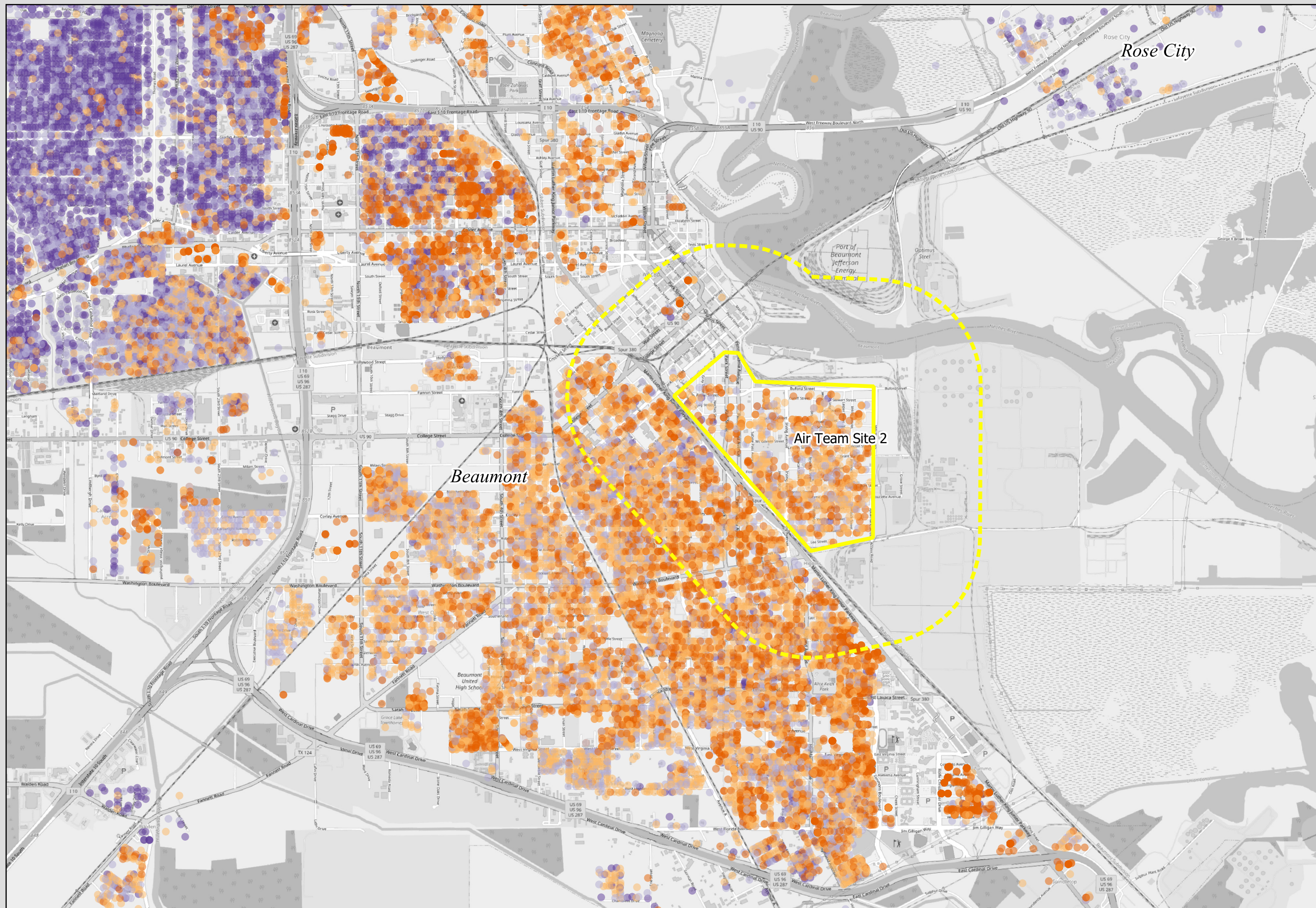
- 1,000 Meter Buffer
- Air Sites
- CDC/ASTSDR SVI
 - Low
 - Low-Medium
 - Medium
 - High
 - No Data



Source: 2018 5-year American Community Survey CDC/ATSDR Social Vulnerability Index (CDC/ATSDR SVI)



Comparison of Household Level Equity Flags with Flood Sites Locations, Southeast Texas



Legend

- 1,000 Meter Buffer
- Air Sites

Equity Flags

- 0
- 1
- 2
- 3

1 dot = 1 household

Equity Flags Include:

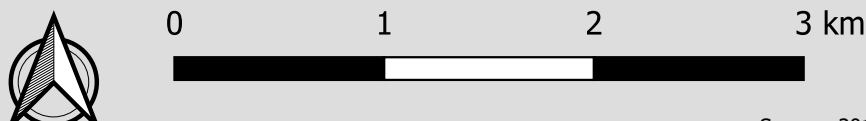
- Income below median (\$45,000)
- Renter
- Minority

0 Equity flags represent a White non-Hispanic homeowner with income greater than \$45,000

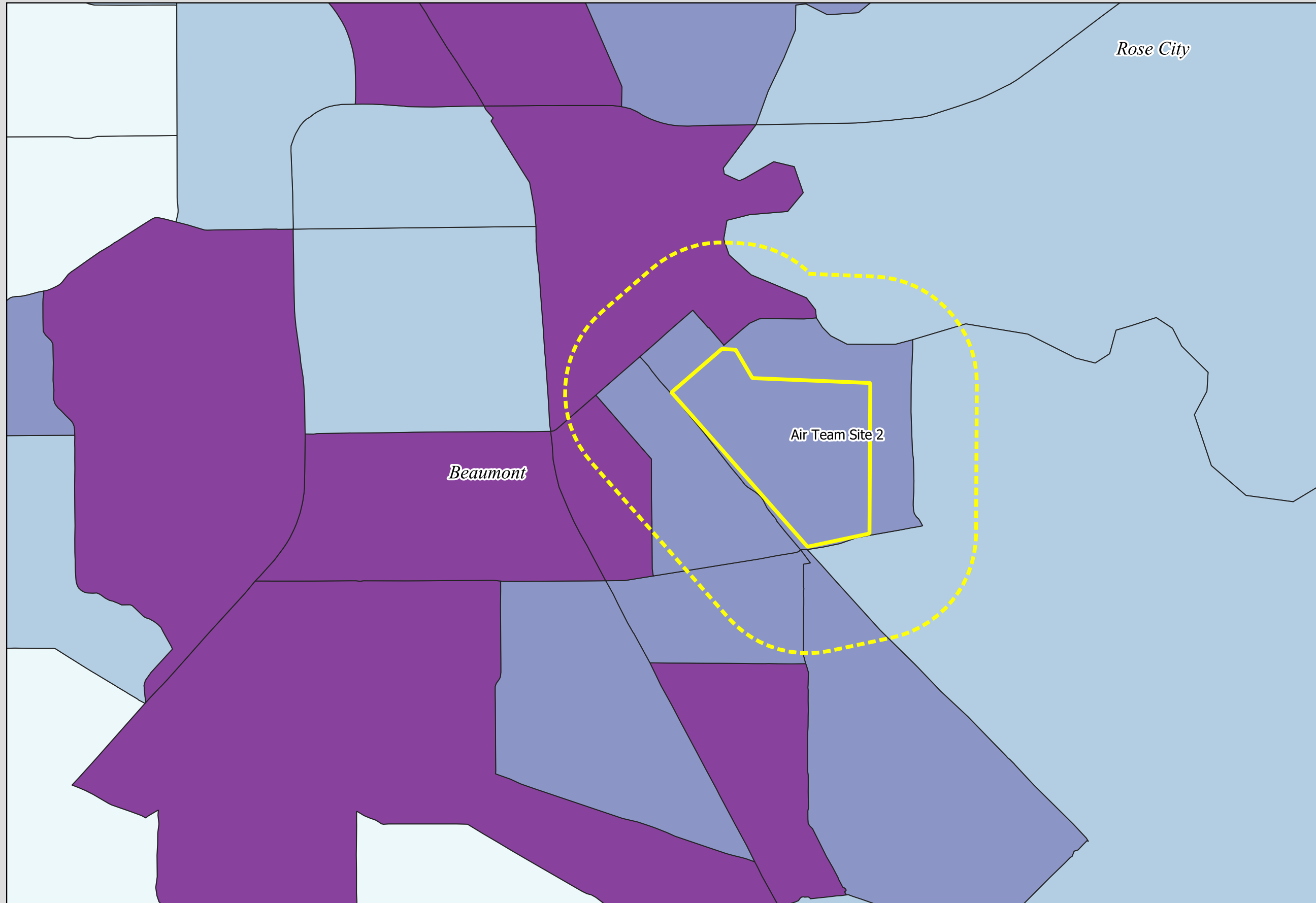
1 Equity flag represents a household that either has low income, is a renter, or a minority.

2 Equity flags represent some combination of 2 flags. For example, a low income renter.

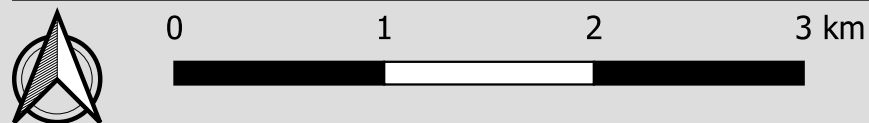
3 Equity flags represent a household that has an income below the median, is a renter and a minority.



Comparison of Census Tract CDC SVI with Flood Sites Locations, Southeast Texas



- Legend
- 1,000 Meter Buffer
 - Air Sites
 - CDC/ASTSDR SVI
 - Low
 - Low-Medium
 - Medium
 - High
 - No Data



Source: 2018 5-year American Community Survey CDC/ATSDR Social Vulnerability Index (CDC/ATSDR SVI)

